

# MONTHLY MEMBERSHIP PROGRESS REPORT

LOCATION INDIA

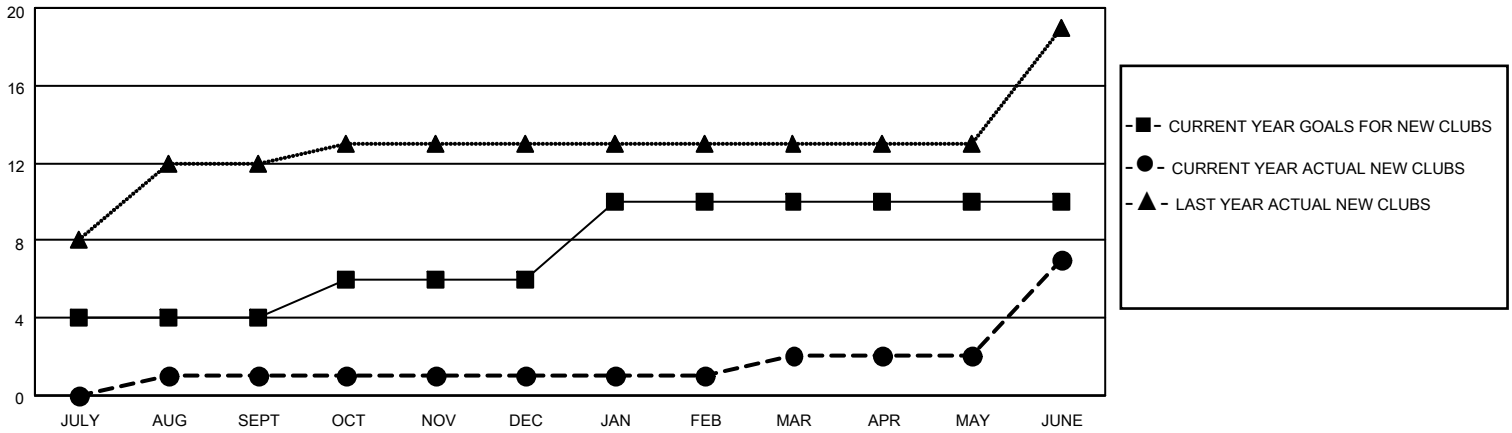
District 324 B

Results as of: 6/30/2023

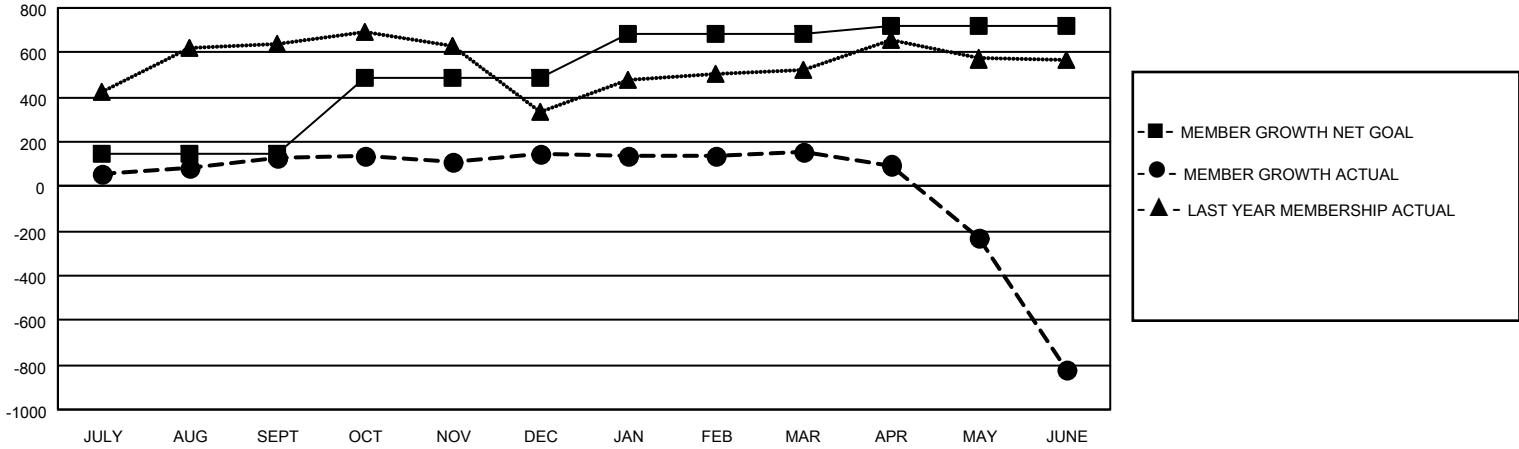
Clubs			
RESULTS FOR 2022-2023			
QUARTER	NEW CLUB GOAL	NEW CLUBS	DROPPED CLUBS
JULY/AUG/SEPT	4	1	1
OCT/NOV/DEC	2	0	4
JAN/FEB/MAR	4	1	1
APR/MAY/JUNE	0	5	2

Members			
RESULTS FOR 2022-2023			
QUARTER	MEMBER GROWTH NET GOAL	MEMBER GROWTH ACTUAL	DROPPED MEMBERS ACTUAL (including transfers)
JULY/AUG/SEPT	150	235	74
OCT/NOV/DEC	340	361	322
JAN/FEB/MAR	190	61	51
APR/MAY/JUNE	40	361	1,255

**GOALS AND ACTUAL NEW CLUBS CUMULATIVE**



**GOALS AND ACTUAL MEMBERS CUMULATIVE**



**DROPPED CLUBS: 8**

143 CLUBS OF 190 ADDED 1 OR MORE NEW MEMBERS

GENDER DISTRIBUTION

MALE	4,980 (78.75%)
FEMALE	1,340 (21.19%)
NON BINARY	0 (0.00%)
PREFER NOT TO ANSWER	4 (0.06%)

DROPPED MEMBERS

DECEASED	27
CLUB CANCELLED	166
OTHER	1,510
<b>TOTAL</b>	<b>1,703</b>

[CLICK HERE FOR CUMULATIVE MEMBERSHIP DATA](#)

TOTAL FAMILY UNIT MEMBERS 3,442

FAMILY MEMBERS PAYING HALF DUES 2,204